

Finished with an Italian-made high polish lacquer, the Armor Bench features two elliptical legs cloaked in finished chainmail. Pulling from the intricate use of chainmail in Medieval armor, we reinterpret its materiality by creating a balance between the strength that the metal mesh evokes and the elegant nature of the high gloss bench finish.



## Armor Bench

---

### Dimensions

60"W x 20"D x 18.5"H

### Materials

stainless steel chainmail and wood with high polish lacquer finish

### Upholstery

COM (2.5 yards)

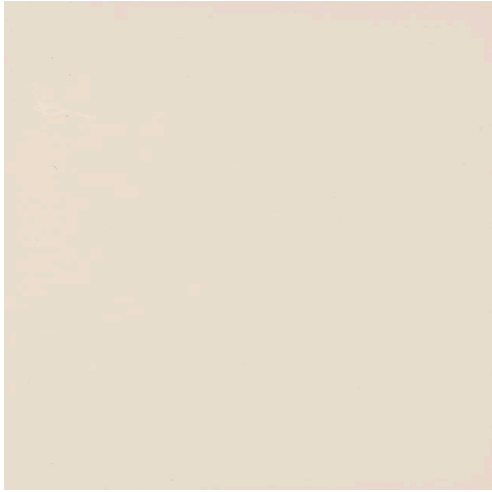
### Lead time

10-12 weeks

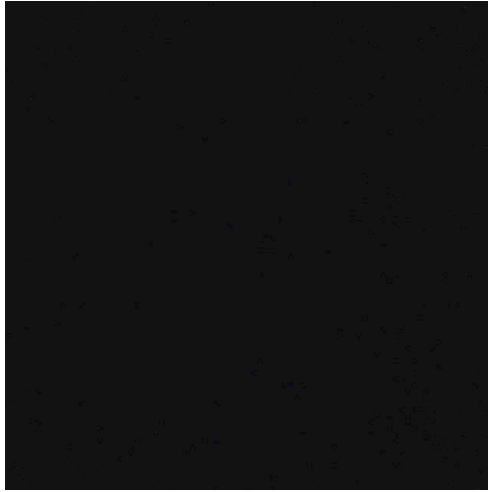
### Finishes

**Bench** - black, cream or custom color

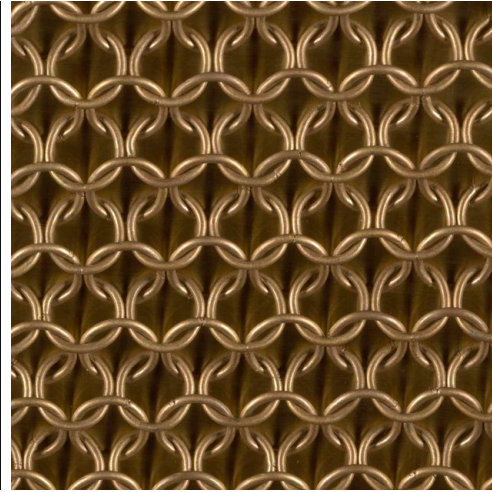
**Chainmail** - satin brass, antique brass, oil-rubbed bronze, satin black, satin nickel or antique nickel



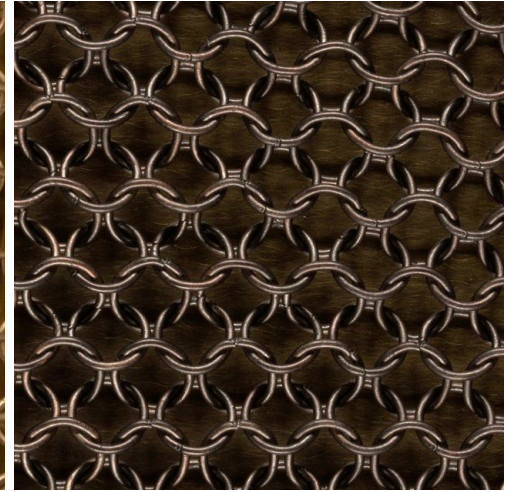
Cream High Polish  
Lacquer



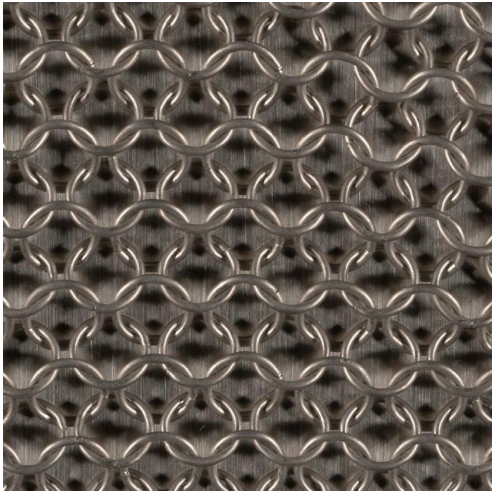
Black High Polish  
Lacquer



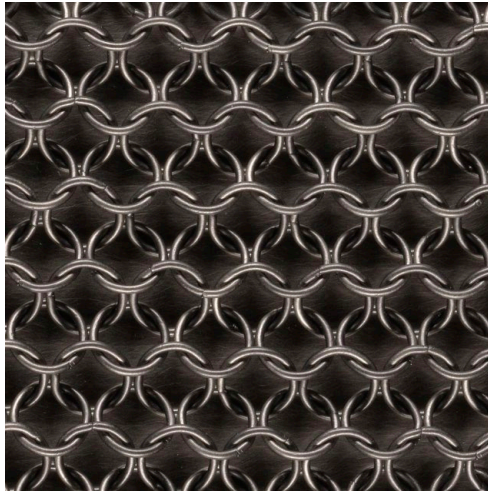
Satin Brass  
Chainmail



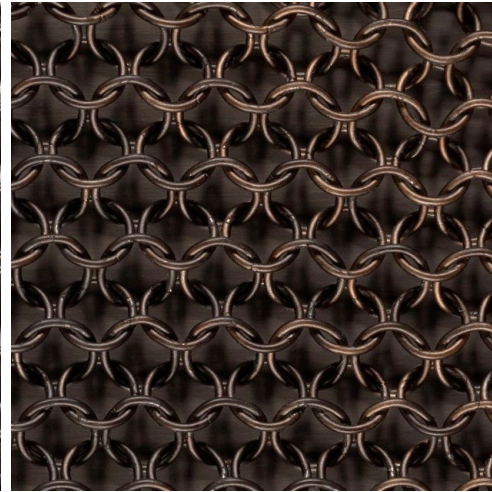
Antique Brass  
Chainmail



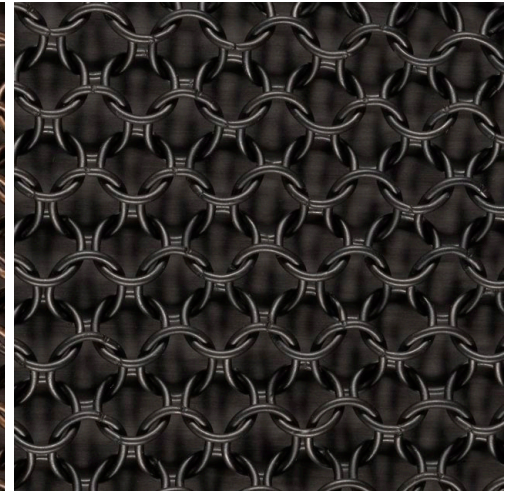
Satin Nickel  
Chainmail



Antique Nickel  
Chainmail



Oil-Rubbed Bronze  
Chainmail



Satin Black  
Chainmail