

Armor Coffee Table

---



Finished with an Italian-made high polish polyurethane, the Armor Coffee Table features three elliptical legs cloaked in finished chainmail. Pulling from the intricate use of chainmail in Medieval armor, we reinterpret its materiality by creating a balance between the strength that the metal mesh evokes and the elegant nature of the high gloss table finish.

## Armor Coffee Table - Round

---

### Dimensions

36"D x 17"H

Custom dimensions available

### Materials

Wood with high gloss polyurethane finish and finished stainless steel chainmail

### Lead time

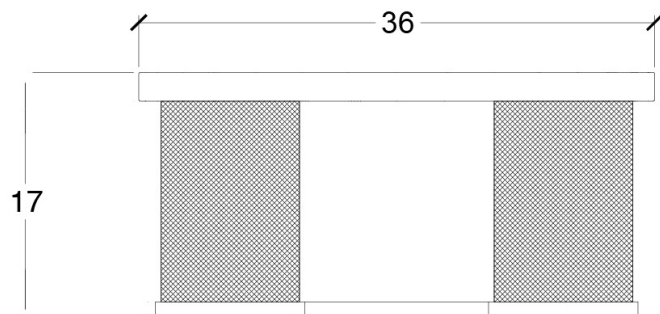
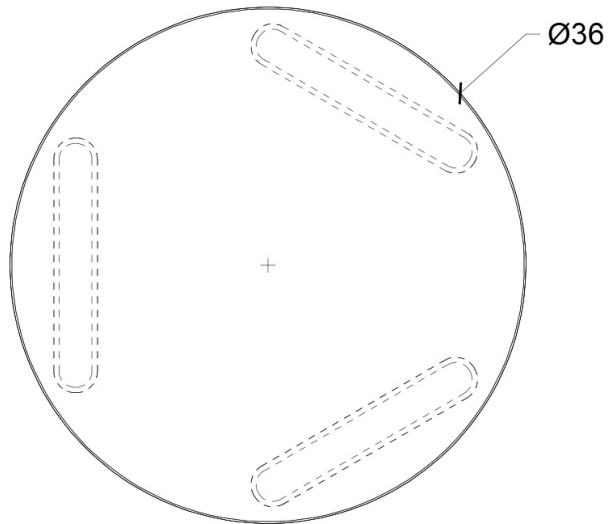
10-14 weeks

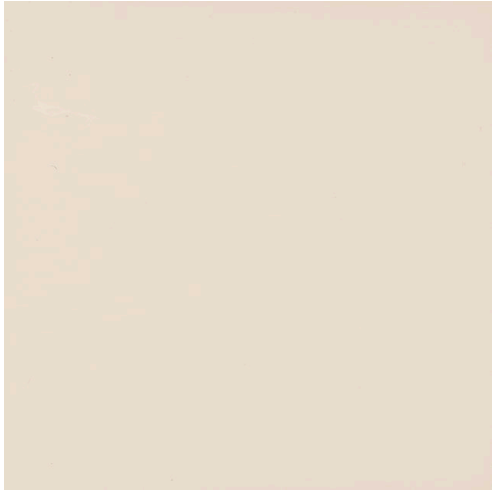
### Chainmail finish

Satin brass, antique brass, oil-rubbed bronze, satin black, satin nickel or antique nickel

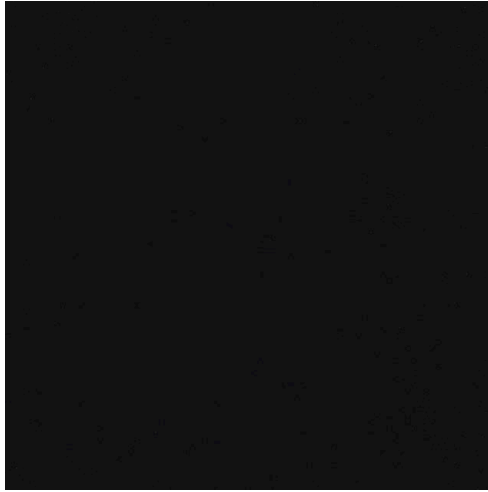
### Table finish

Black, cream or custom color

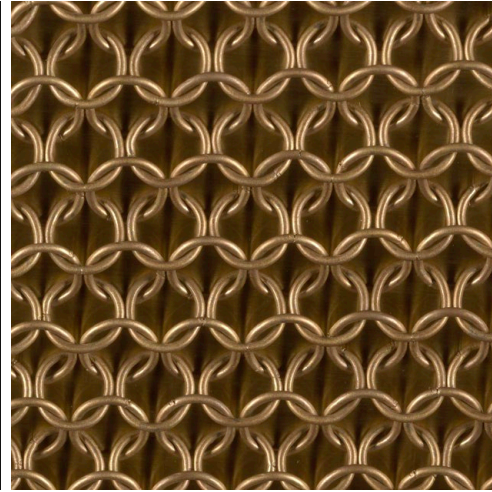




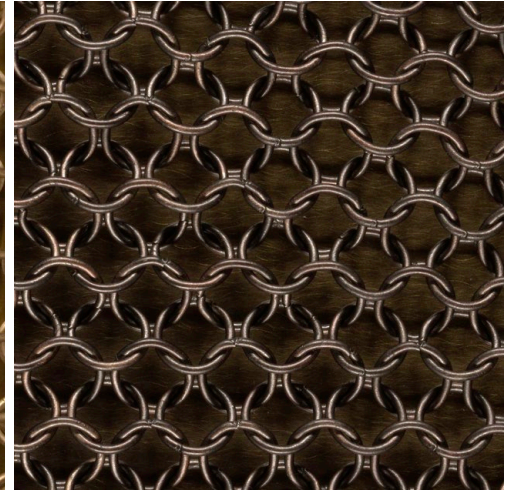
Cream High Polish  
Lacquer



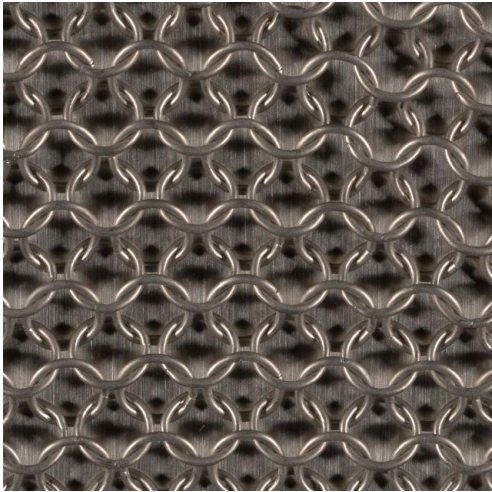
Black High Polish  
Lacquer



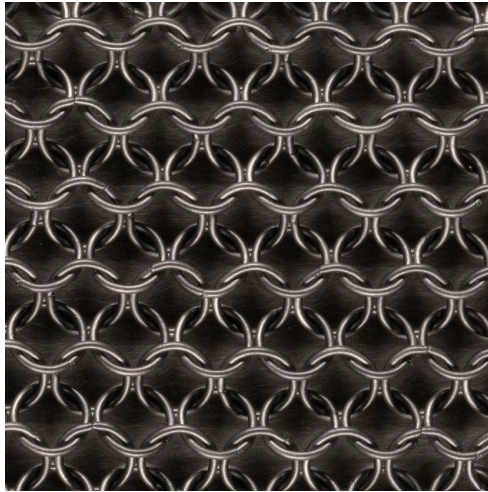
Satin Brass  
Chainmail



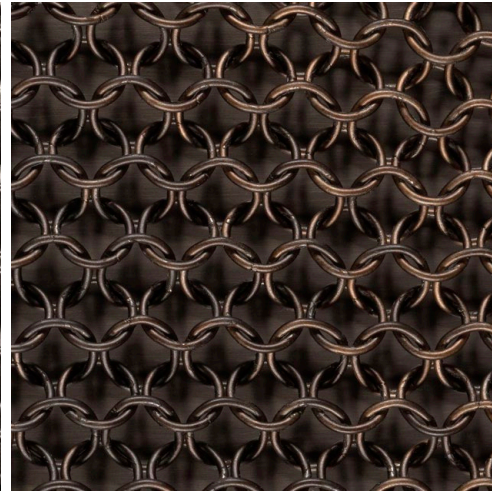
Antique Brass  
Chainmail



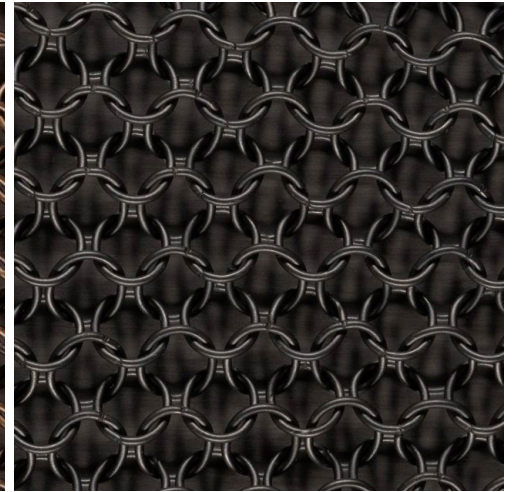
Satin Nickel  
Chainmail



Antique Nickel  
Chainmail



Oil-Rubbed Bronze  
Chainmail



Satin Black  
Chainmail