

Armor Coffee Table

---



Available in a variety of wood options or an Italian-made high polish lacquer finish, the Armor Coffee Table features three elliptical legs cloaked in finished chainmail. Pulling from the intricate use of chainmail in Medieval armor, we reinterpret its materiality by creating a balance between the strength that the metal mesh evokes and the elegant curves of the table.

## Armor Coffee Table - Triangle

---

### Dimensions

58"W x 38"D x 17"H

Custom dimensions available

### Materials

Wood and stainless steel chainmail

### Table finish

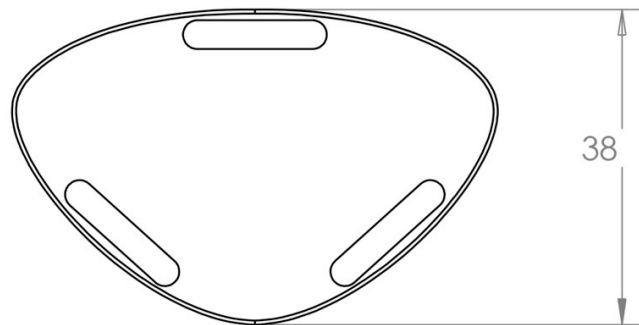
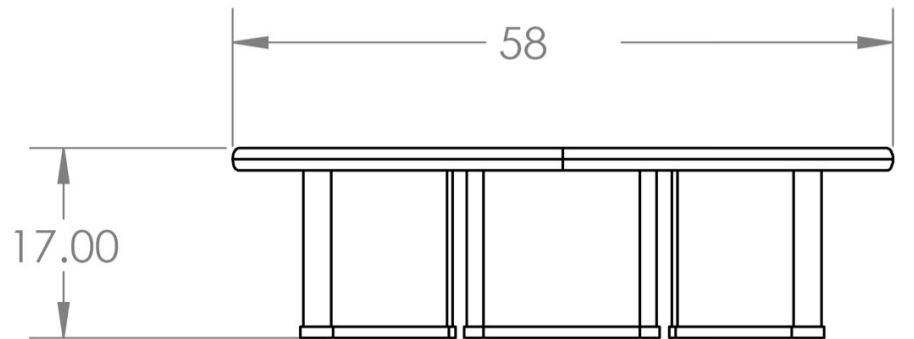
Blackened ash, natural oak, natural walnut, ebonized walnut, bleached walnut, black high gloss lacquer or cream high gloss lacquer

### Chainmail finish

Satin brass, antique brass, oil-rubbed bronze, satin black, satin nickel or antique nickel

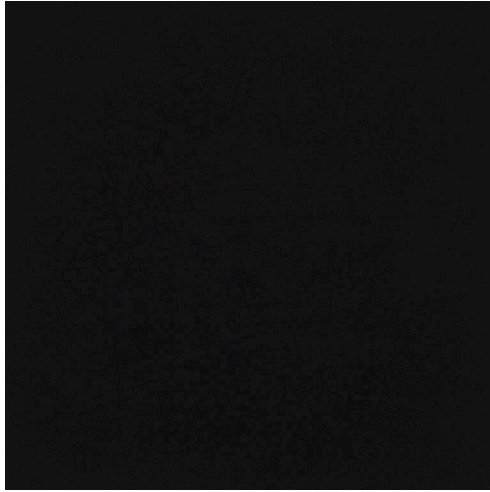
### Lead time

10-14 weeks

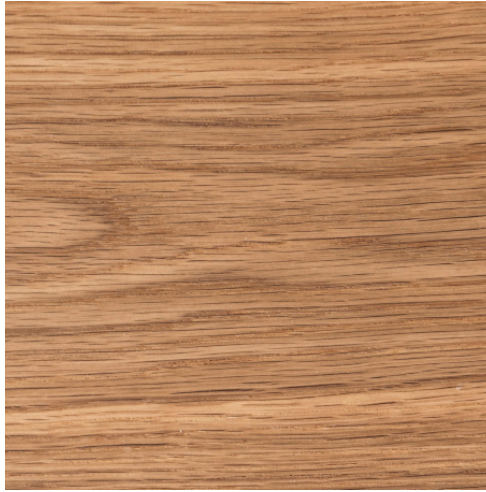




Cream High Polish  
Lacquer



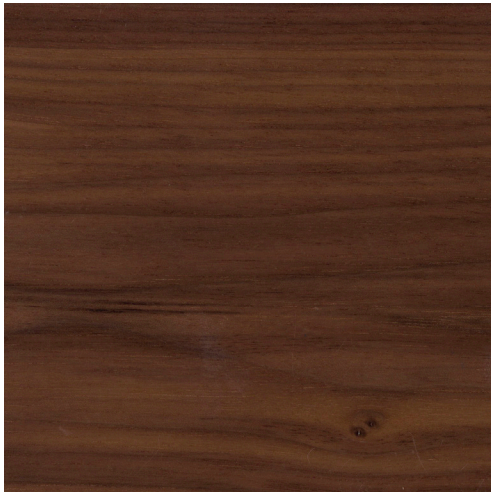
Black High Polish  
Lacquer



Natural Oak



Blackened Ash



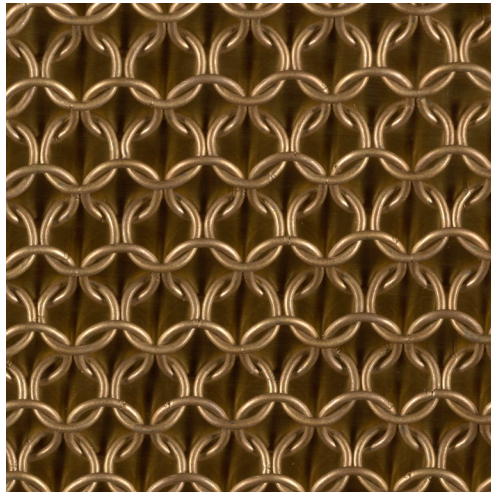
Natural Walnut



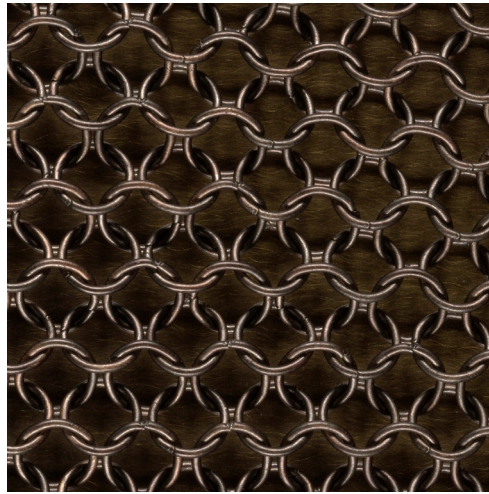
Bleached Walnut



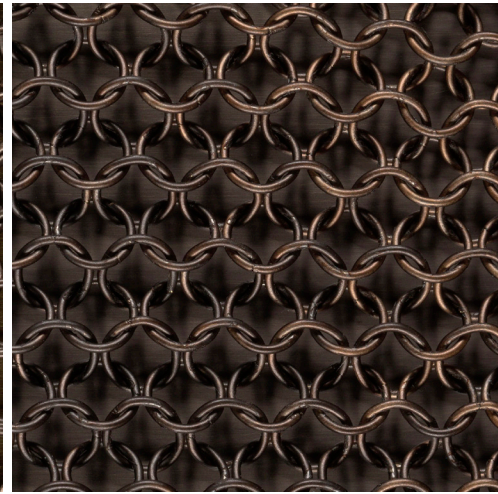
Ebonized Walnut



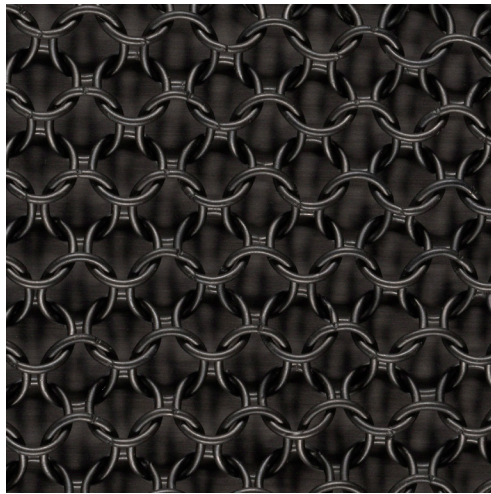
Satin Brass



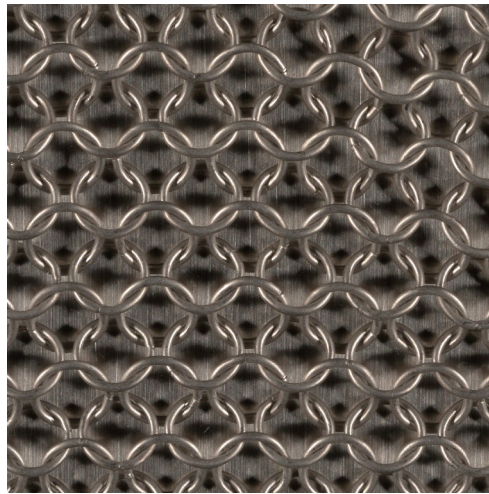
Antique Brass



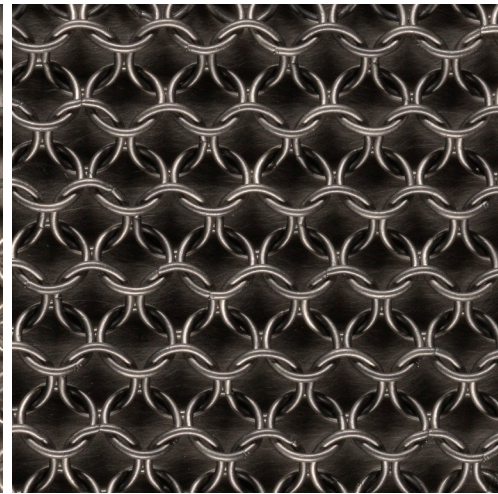
Oil-Rubbed Bronze



Satin Black



Satin Nickel



Antique Nickel