

Armor Floor Lamp

---



info@konektstudio.com  
+1 (917) 261-6470  
@konektstudio.com

konekt

A hand-blown glass pendant hangs from an elegant, arcing curve – both cloaked in chainmail to strike a balance between strength and delicacy. A rectangular base grounds the lamp, featuring a dimmer knob to control the luminescent glow.

## Armor Floor Lamp

---

### Dimensions

28.5"W x 8"D x 81.5"H

### Materials

hand-blown glass, brass, steel and finished stainless steel  
chainmail

### Metal Finish

satin brass, antique brass, oil-rubbed bronze, satin black, satin  
nickel or antique nickel

### Lead time

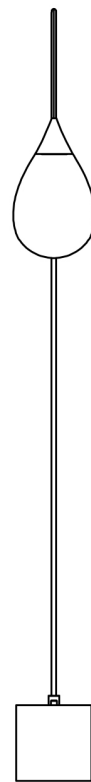
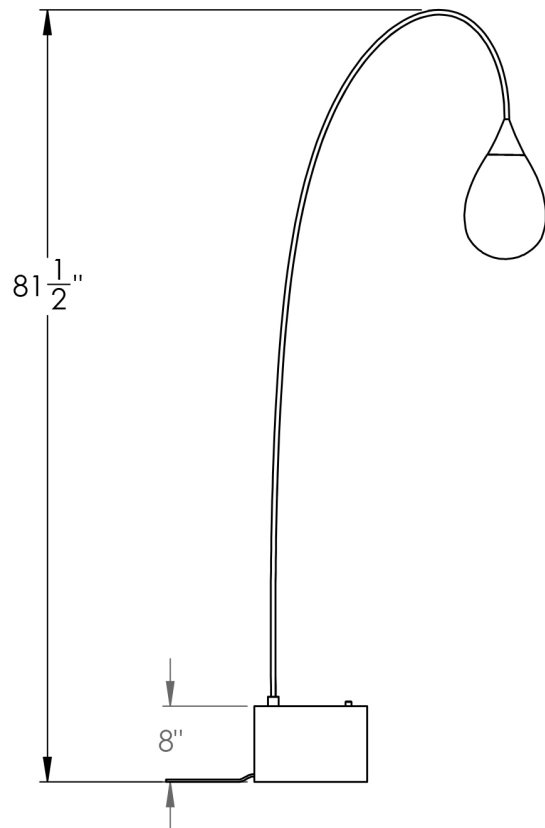
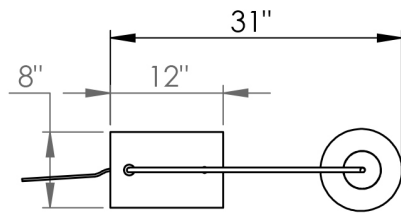
8-12 weeks

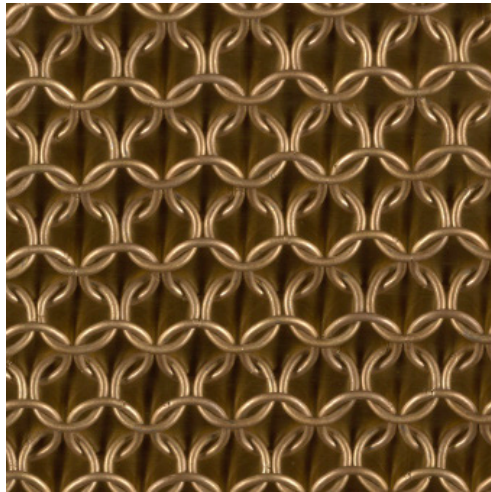
### Lamping

E26 | 120V | 60W

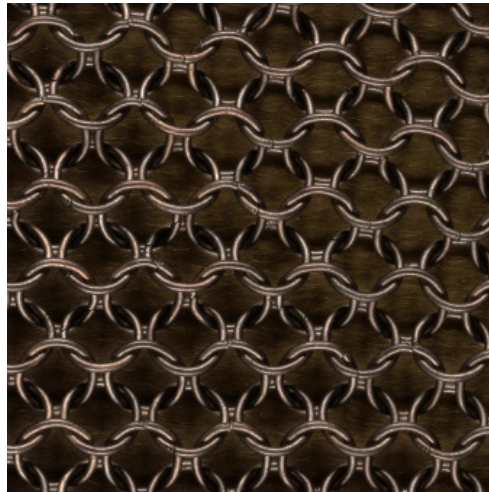
9.5W dimmable LED bulb included

120V; 950 lumens; 2700k color temperature

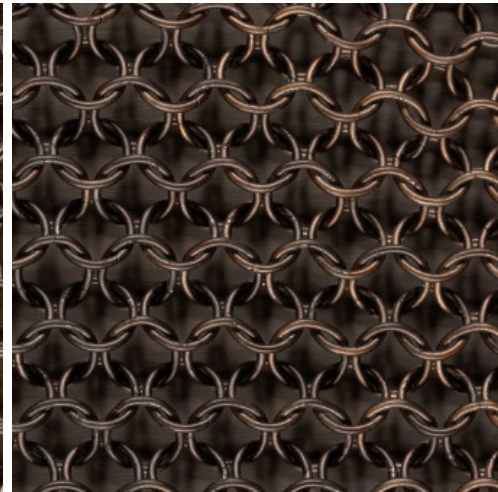




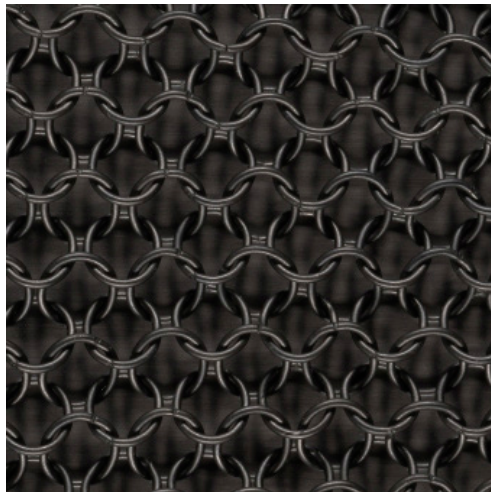
Satin Brass



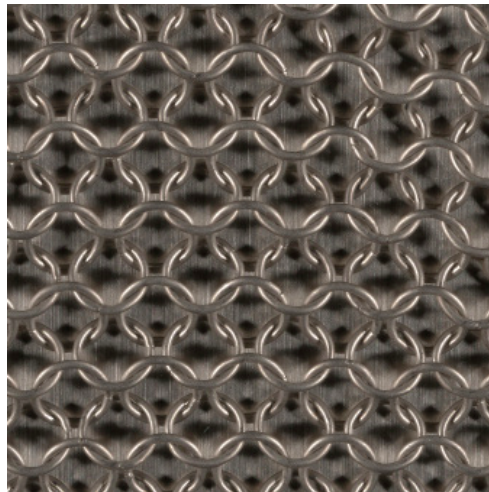
Antique Brass



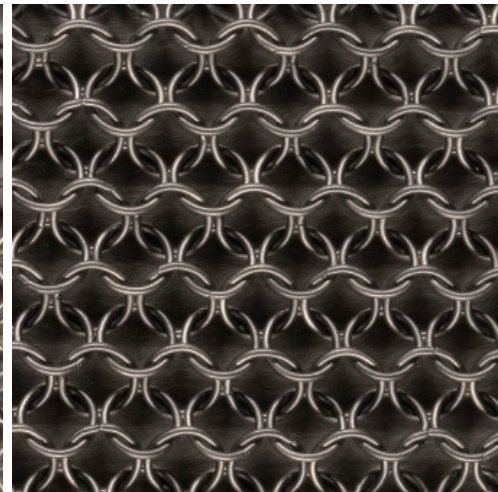
Oil-Rubbed Bronze



Satin Black



Satin Nickel



Antique Nickel