

The Armor Pendant features a carefully crafted hand-blown glass pendant draped with finished stainless steel chainmail. Pulling from the intricate use of chainmail in Medieval armor, we reinterpret its materiality by creating a balance between the strength that the metal mesh evokes and the delicate and elegant nature of hand-blown glass.

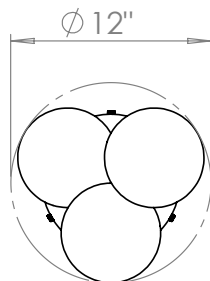
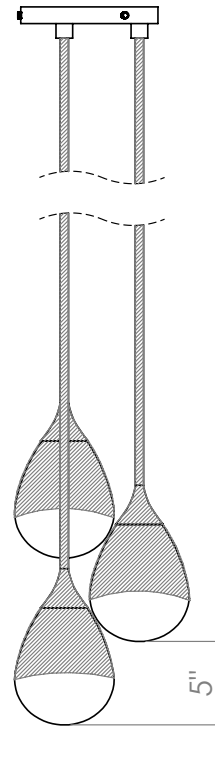
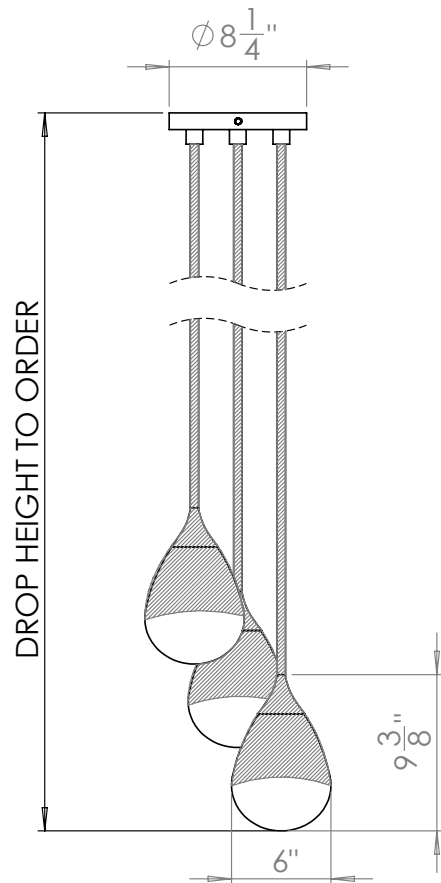
Available in two sizes as a single pendant, a double fixture, or a cluster of three, five or seven pendants. Also available in custom configurations.

Armor Pendant

---



## Armor Pendant 3 Cluster - Small



### Dimensions

Overall diameter: 12"D

Canopy:  $8 \frac{1}{4}$ "D

Drop height cut to order. Pricing includes up to 78"H. For longer drop lengths please inquire for custom quote.

### Materials

hand-blown glass, brass and finished stainless steel chainmail

### Finishes

Satin brass, antique brass, oil-rubbed bronze, satin black, antique nickel, satin nickel

### Lamping

120V | E12 screw base | max 40W

240V available, please inquire

### Bulb included

120V: (3x) 3W dimmable LED bulbs; 210 lumens; 2200k

### UL listed

### Weight

Approx. 13-16 lbs.

### Lead time

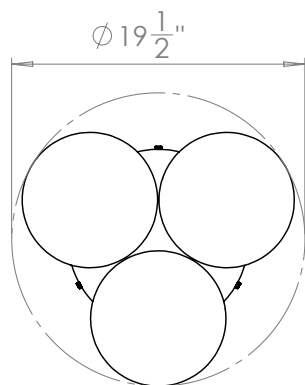
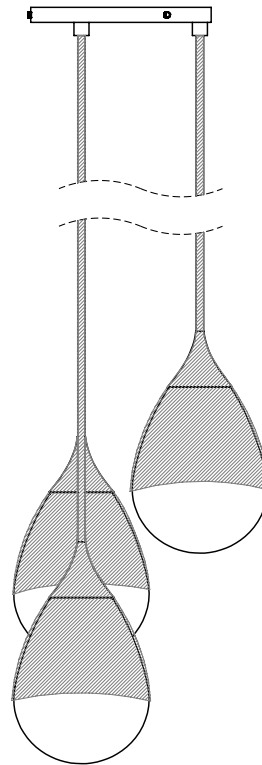
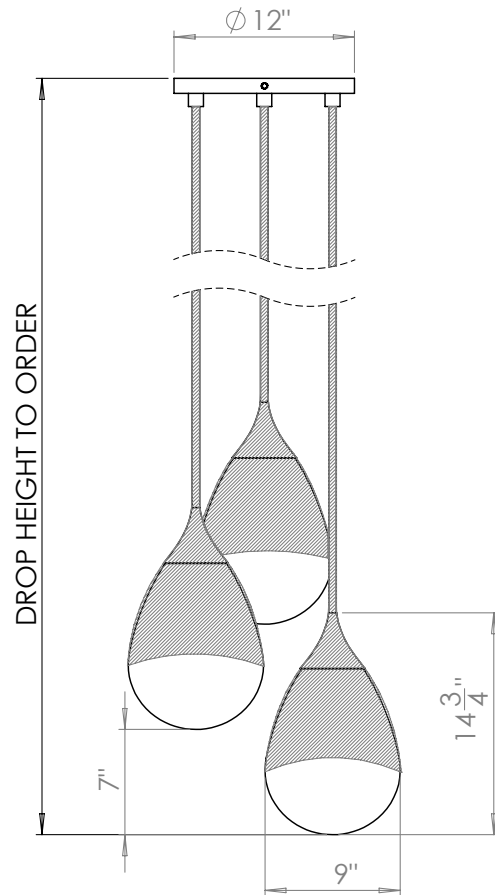
8-12 weeks

Armor Pendant

---



## Armor Pendant 3 Cluster - Large



### Dimensions

Overall diameter: 19 1/2"D

Canopy: 12"D

Drop height cut to order. Pricing includes up to 78"H. For longer drop lengths please inquire for custom quote.

### Materials

Glass, brass, stainless steel chainmail

### Finishes

Satin brass, antique brass, oil-rubbed bronze, satin black, antique nickel, satin nickel

### Lamping

120V | E26 screw base | max 40W

240V available, please inquire

### Bulb included

120V: (3x) 3W dimmable LED bulb; 210 lumens; 2200k

### UL listed

### Weight

Approx. 20-24 lbs.

### Lead time

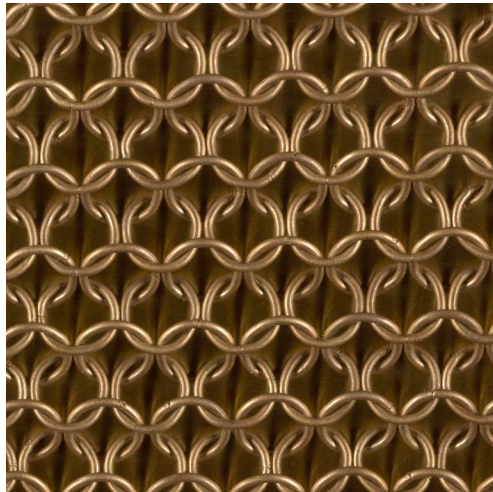
8-12 weeks

info@konektstudio.com

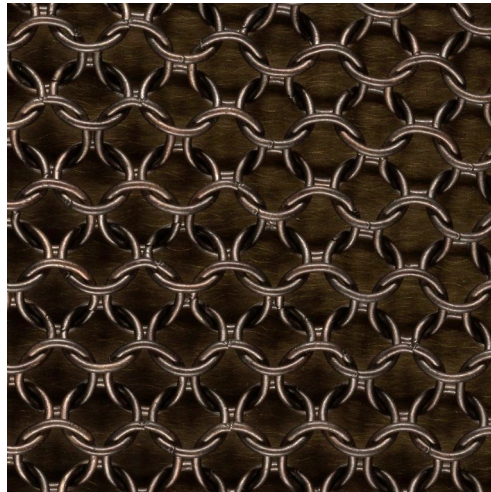
+1 (917) 261-6470

@konektstudio.com

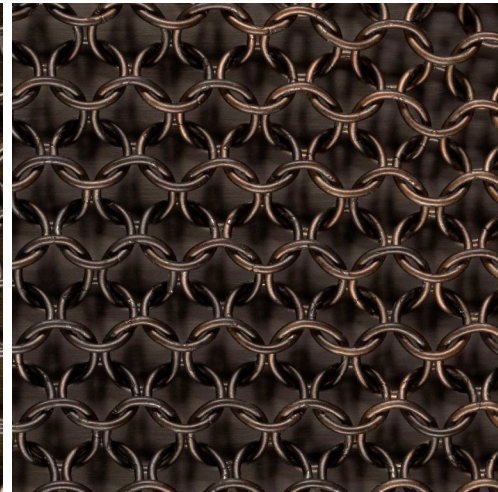
konekt



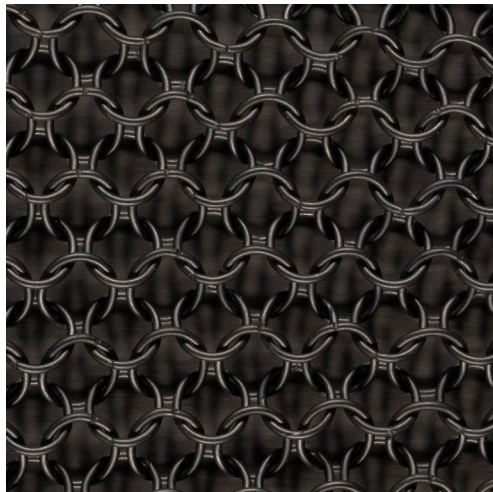
Satin Brass



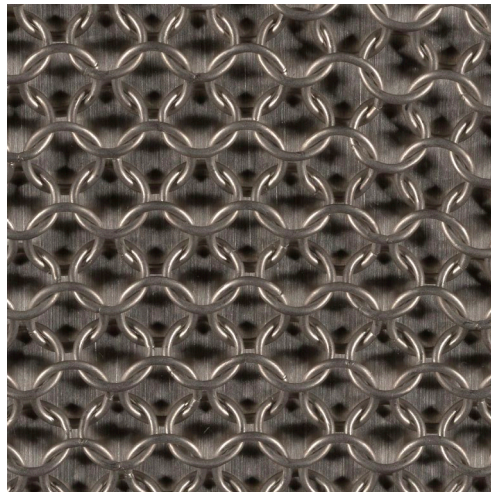
Antique Brass



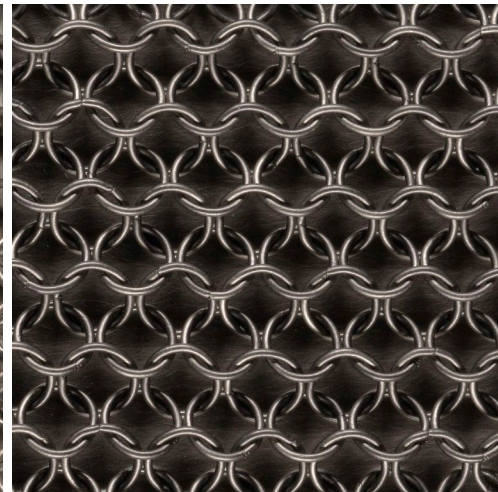
Oil-Rubbed Bronze



Satin Black



Satin Nickel



Antique Nickel