

Armor Pendant



The Armor Pendant features a carefully crafted hand-blown glass pendant draped with finished stainless steel chainmail. Pulling from the intricate use of chainmail in Medieval armor, we reinterpret its materiality by creating a balance between the strength that the metal mesh evokes and the delicate and elegant nature of hand-blown glass.

Available in two sizes as a single pendant, a double fixture, or a cluster of three, five or seven pendants. Also available in custom configurations.

Armor Pendant Double - Small

Dimensions

Overall diameter: 12"D

Canopy: 8 1/4"D

Drop height cut to order. Pricing includes up to 78"H. For longer drop lengths please inquire for custom quote.

Materials

Glass, brass, stainless steel chainmail

Finishes

Satin brass, antique brass, oil-rubbed bronze, satin black, antique nickel, satin nickel

Lamping

120V | E12 screw base | max 40W

240V available, please inquire

Bulb included

120V: (2x) 3W dimmable LED bulbs; 210 lumens; 2200k

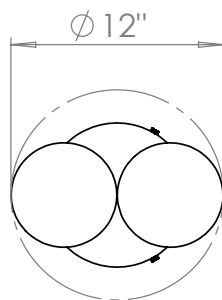
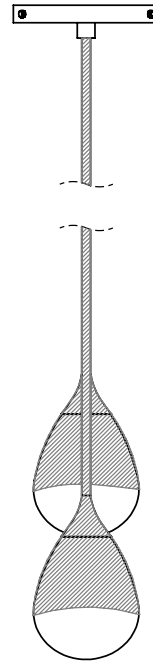
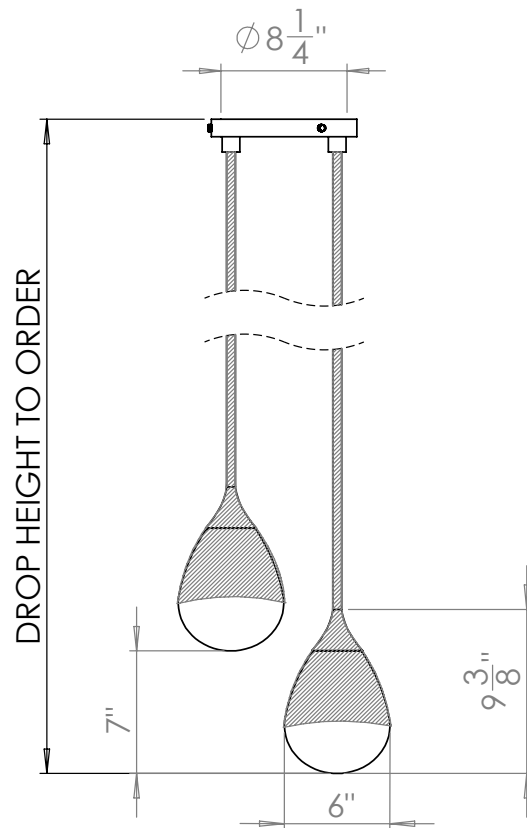
UL listed

Weight

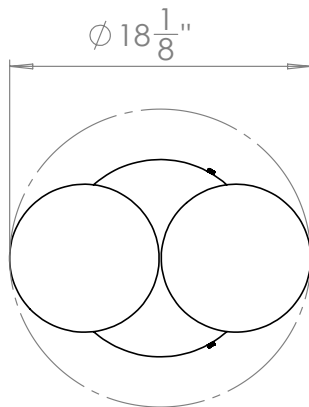
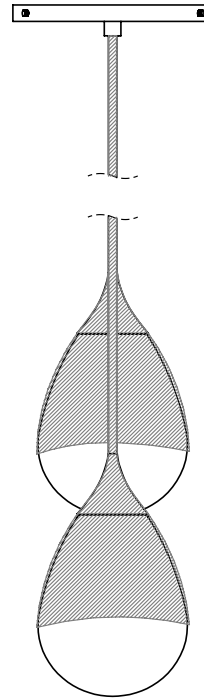
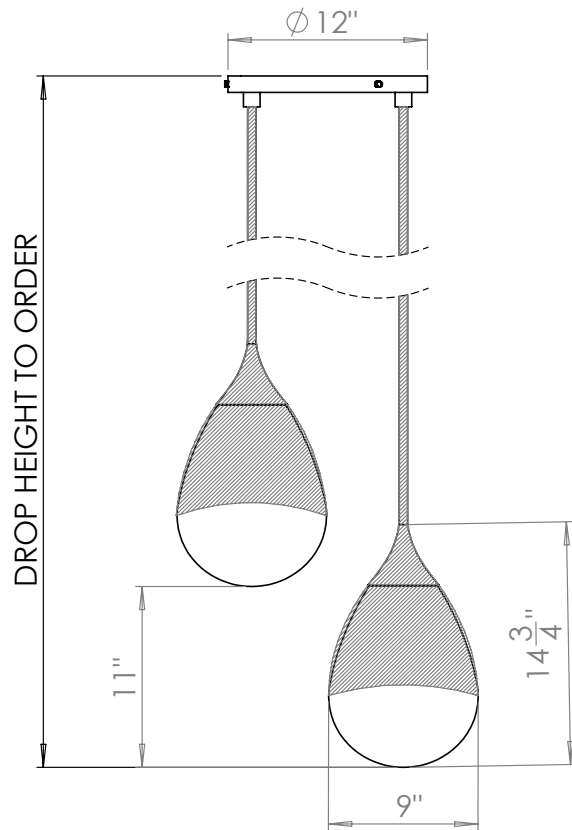
Approx. 10-11 lbs.

Lead time

8-12 weeks



Armor Pendant Double - Large



Dimensions

Overall diameter: $18 \frac{1}{8}''$ D

Canopy: $12''$ D

Drop height cut to order. Pricing includes up to $78''$ H. For longer drop lengths please inquire for custom quote.

Materials

Glass, brass, stainless steel chainmail

Finishes

Satin brass, antique brass, oil-rubbed bronze, satin black, antique nickel, satin nickel

Lamping

120V | E26 screw base | max 40W

240V available, please inquire

Bulb included

120V: (2x) 3W dimmable LED bulb; 210 lumens; 2200k

UL listed

Weight

Approx. 12-15 lbs.

Lead time

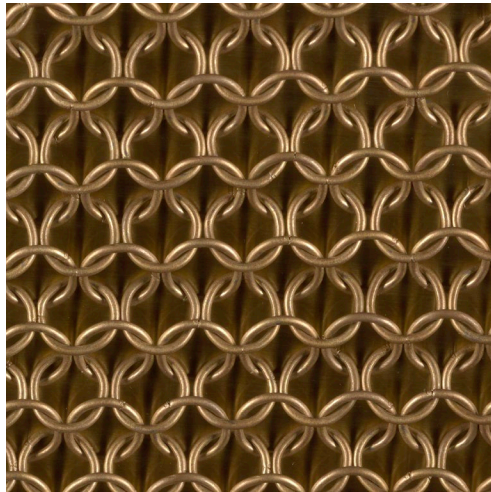
8-12 weeks

info@konektstudio.com

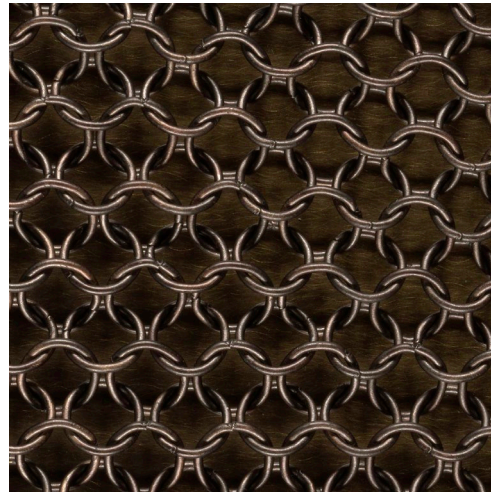
+1 (917) 261-6470

@konektstudio.com

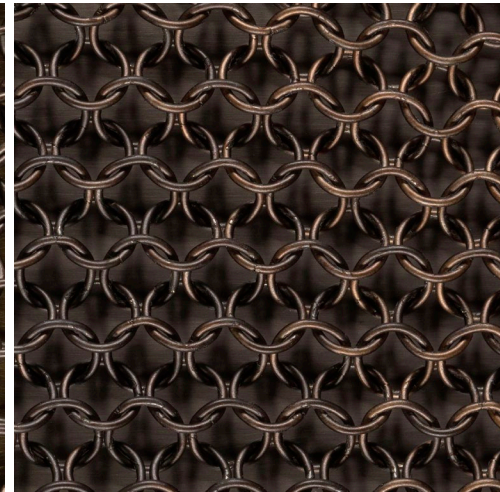
konekt



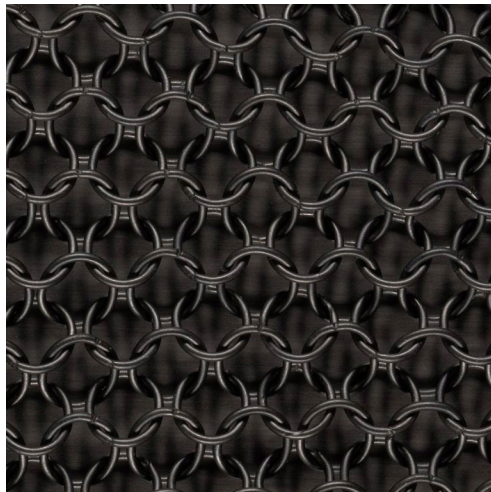
Satin Brass



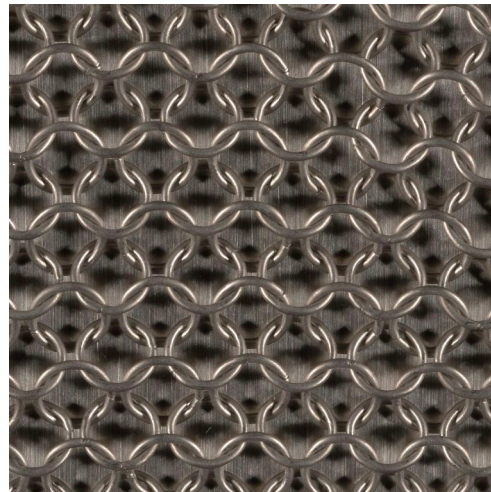
Antique Brass



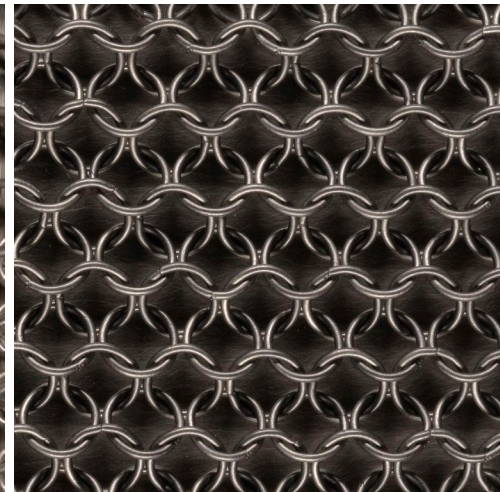
Oil-Rubbed Bronze



Satin Black



Satin Nickel



Antique Nickel