

Part of the Stone Collection, the Sonya Table evokes the soft curves of tumbled stones shaped by the ocean. The table showcases a meticulously hand-sculpted convex bronze or steel base, and a slim wood table top with a sloped, gracefully rounded edge – achieving a striking balance between solidity and lightness. *Made by hand in Pennsylvania.*

## Sonya Table

---

### Dimensions

48"D x 30"H

Custom dimensions available

### Materials

wood top and bronze or steel base

### Finishes

#### Base

blackened steel or hand-patina bronze

#### Wood top

ash, bleached ash, white oak, smoked white oak, walnut or ebonized walnut

### Lead time

22-24 weeks

Free form and hand-sculpted, each table is slightly unique



info@konektstudio.com  
+1 (917) 261-6470  
@konektstudio.com

konekt



Ash



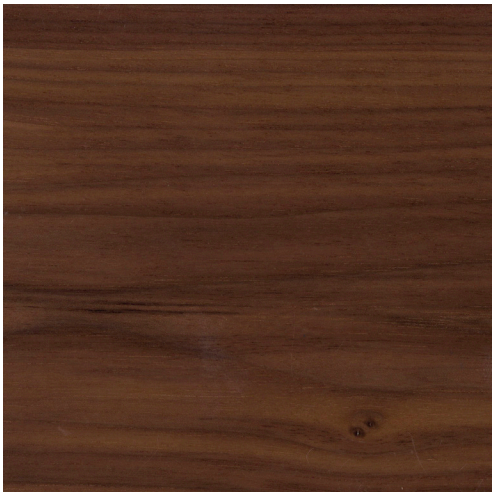
Bleached Ash



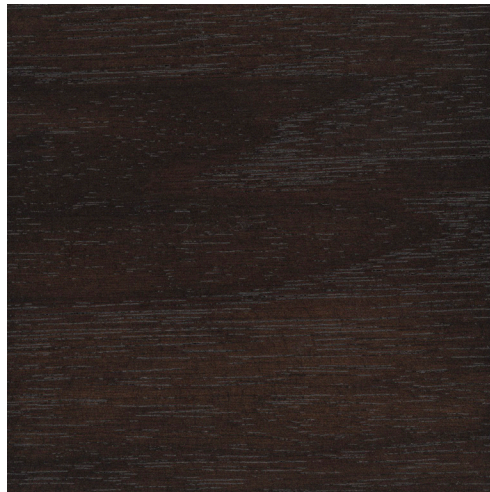
Oak



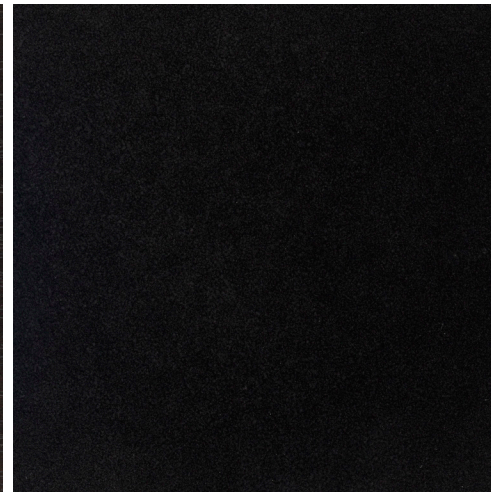
White Oil Oak



Walnut



Ebonized Walnut



Blackened Steel



Hand-Patina Bronze